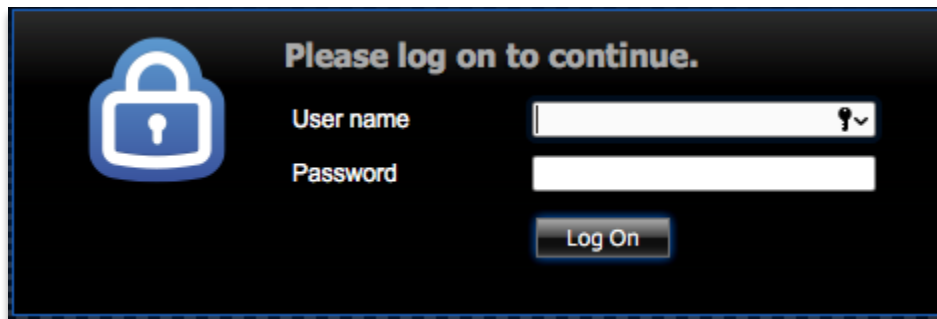


Windows – FireFox

Please note, Citrix Receiver is a pre-requisite to this guide. If it is not installed, download and install it from the link on the bottom of the page after logging into remote.unitypoint.org: the below link will be at the bottom of the page right in the middle.

Download Citrix Receiver client for [Windows](#)

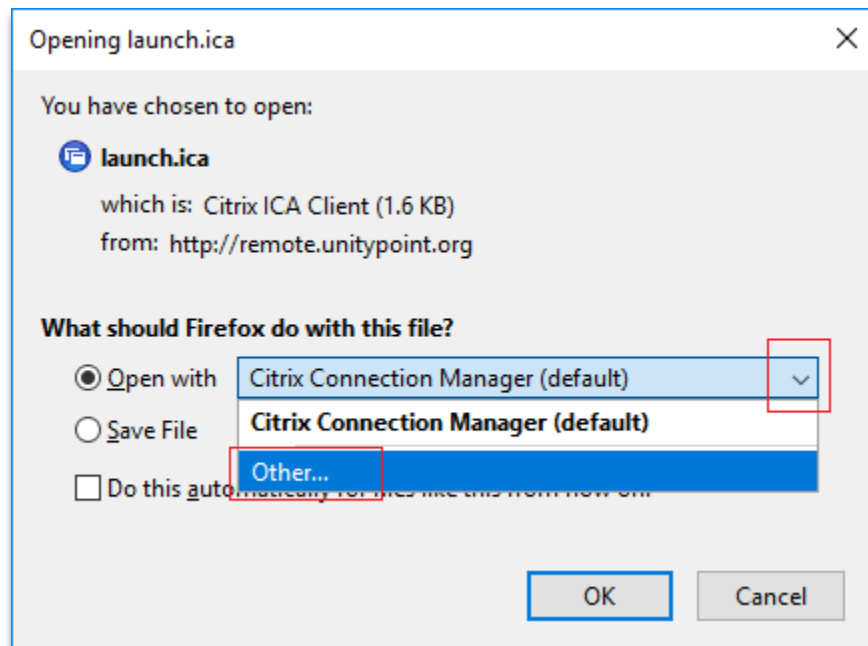
Connect to <https://remote.unitypoint.org/> and fill in your domain credentials and click **Log On**. Once you log in to Citrix, you will be prompted to enter the code you get as part of Multi-Factor Authentication. If you are not yet enrolled in Multi-Factor Authentication, review the tip sheet or contact the IT Service Center at 1-800-681-2060:

A screenshot of the Citrix login interface. On the left is a blue padlock icon with a white keyhole. To its right, the text "Please log on to continue." is displayed in white. Below this, there are two input fields: "User name" and "Password". The "User name" field has a small key icon on the right. Below the "Password" field is a "Log On" button.

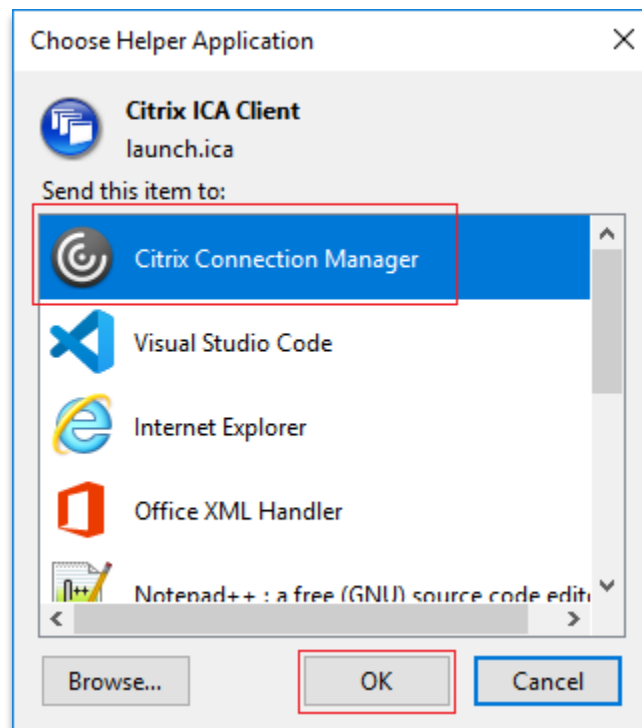
Once logged in, locate the Lawson icon and click it to launch Lawson:



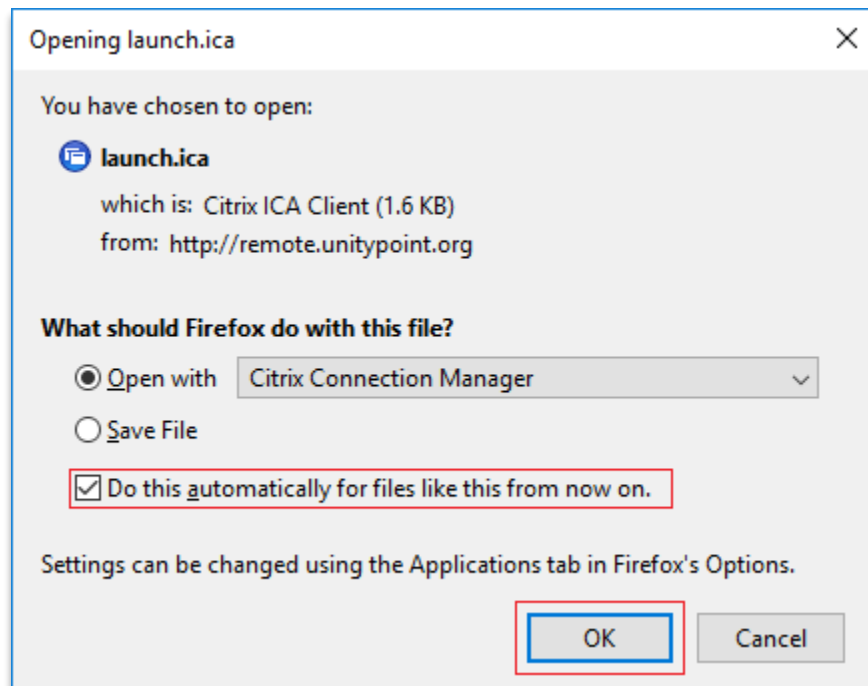
Once the file is downloaded, the “Opening launch.ica” box will open, click the drop-down arrow to the right of **Open with** and choose **Other**:



On the “Choose Helper Application” window, select **Citrix Connection Manager** and click **OK**:



When back at the “Opening launch.ica” window, check the box for **Do this automatically for files like this from now on.** and click **OK**:



A new window with the Lawson login page will open:

